

# Victor Yang - MSc - Managing Director

AUSTRALIA XINHAI MINING SERVICES PTY LTD





## ■ XINHAI CORPORATE VISION ■



### **From Resources to Value, We Delivery Excellence!**

Empowering every mine' s unique value with customized professional technology and outstanding mining equipment, together driving high efficiency and sustainable development in the mining industry.



# Contents



**Part 1**

**Company Overview**

---

**Part 2**

**Competitiveness Highlights**

---

**Part 3**

**Project References**

---





01

PART 1 ↙

COMPANY OVERVIEW



**Australia Xinhai Mining Services Pty Ltd** is a Perth based mining solutions provider, which is a Branch office of **Shandong Xinhai Mining Technology & Equipment Inc.**, a leading international EPC+M+O service provider in the mining industry, delivering full-cycle solutions across **mining, processing plant, and tailings storage facility (TSF)**.

**The core business consists of** technical consulting, metallurgic test and mine design (**E**), full process equipment manufacturing and procurement (**P**), construction and commissioning (**C**), project management (**M**), mine operation and services (**O**).

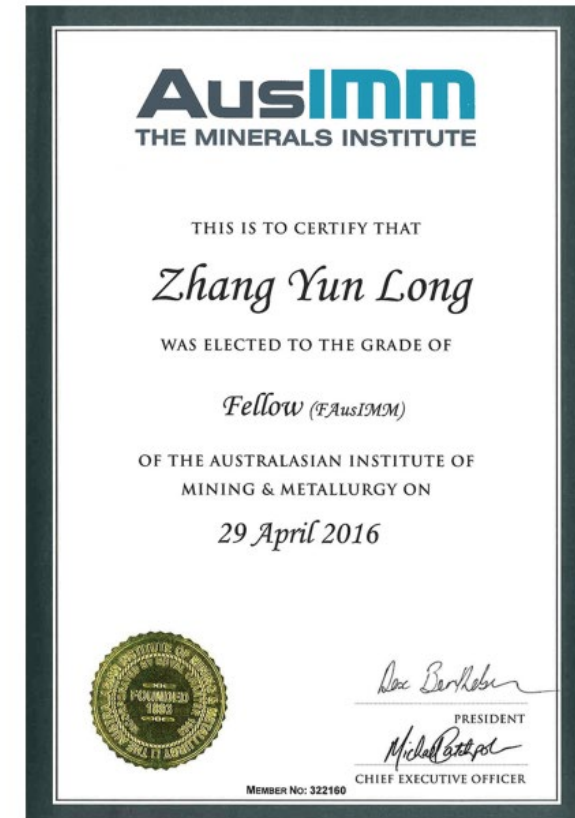




## Elon Zhang - PHD, Founder



- Outstanding Entrepreneur of intelligent Manufacturing in China
- 2024 Yantai innovation Pioneer Entrepreneur
- 2022 Yantai Mayor Quality Award
- Enterprise Technology innovation Award in shandong Province





Xinhai is a pioneer and leader in providing “EPC+M+O” full-chain, specialized, and institutionalized service segments.

## SHANDONG XINHAI MINING TECHNOLOGY & EQUIPMENT INC.

e

+

E

P

C

O

### e-commerce



BEIJING XINHAI E-COMMERCE TECHNOLOGY CO., LTD.

### Engineering



YANTAI XINHAI MINING RESEARCH & DESIGN CO., LTD.

### Procurement



YANTAI XINHAI INTELLIGENT EQUIPMENT CO., LTD.

YANTAI XINHAI AUTOMATION TECHNOLOGY CO., LTD.

YANTAI XINHAI MATERIALS TECHNOLOGY CO., LTD.

### Construction



YUNNAN XINHAI CONSTRUCTION ENGINEERING CO., LTD.

### Mine Operation



YANTAI XINHAI PROJECT MANAGEMENT GROUP CO., LTD.

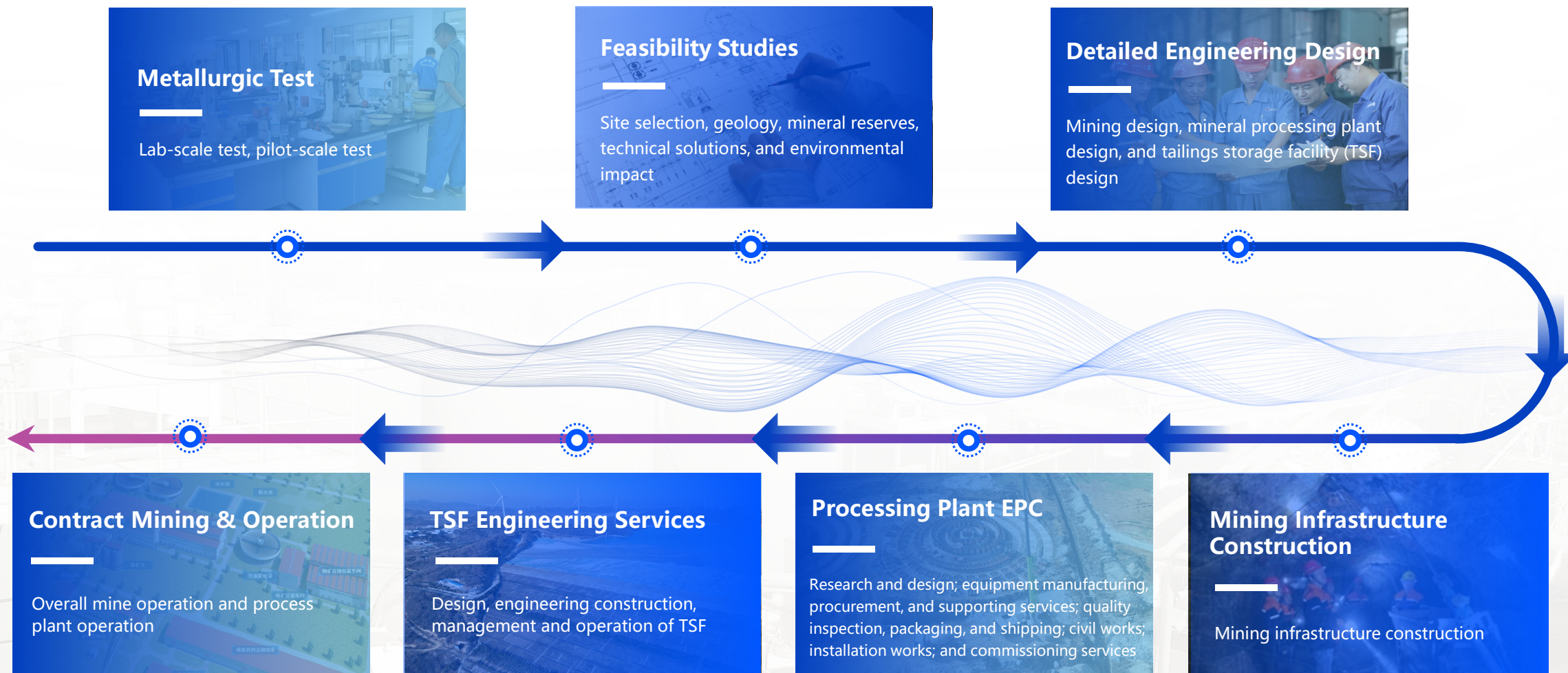
HONGKONG XINHAI MINING SERVICES LIMITED

M

Mining Contract

Project Management







## Class-A Qualification for General Contracting of Mine Construction Projects

A mandatory qualification for mining, processing, and TSF construction





Laboratory Accreditation  
Certificate of the China National  
Accreditation Service for  
Conformity Assessment (CNAS)



EU CE Certification



ISO 14001:2015  
Environmental Management  
System Certification



Certificate of Engineering  
Design Qualification



Construction Labor  
Qualification of Xinhai



CWB Certification



CSA Welding Company Certification,  
CWB Welder Qualification and CWB  
Welding Supervisor Certification



ISO 9712 Non-destructive Testing  
— Qualification and Certification of  
NDT Personnel



Patents filed: **+250**, **46** granted in 2024

Active domestic trademarks: **5**

Valid copyrights: **224**

Madrid trademark protection: across **26** countries





02

PART 2



COMPETITIVENESS HIGHLIGHTS



# 1 / Broad International Coverage.



## 2 / Xinhai Activities in Australia

- Feb 2025 - \$8 million Equity Investment and EPC deal with St George Mining
- Jun 2025 – Design contract awarded by a Gold Company in Tasmania
- Jul 2025 – Xinhai Australia Branch registered
- Sep 2025 – Binding MOU with Antilles Gold Ltd (ASX:AAU) to provide US\$17.1m Credit Facility for a Cuba mine
- Sep 2025 – Detailed Engineering Contract and Capital raising with Ryzon for Naxhu Graphite Project in Tanzania
- Sep 2025 Binding commitments to raise \$4million to Flagship
- Oct 2025 \$2.60m cash to SSH as partnership and largest Shareholder

### ASX Announcement



11 September 2025

#### BINDING MoU SIGNED FOR EPC CONTRACT & CREDIT FACILITY NUEVA SABANA COPPER-GOLD MINE, CUBA

Antilles Gold Limited ("Antilles Gold" or the "Company") (ASX: AAU) is pleased to advise that a binding Memorandum of Understanding ("MoU") setting out the terms under which major Chinese mining and engineering group, Shandong Xinhai Mining Technology Systems Inc ("Xinhai"), will undertake the engineering, procurement, and construction ("EPC") contract for the Nueva Sabana mine in central Cuba, has been executed.

The parties to the MoU are Xinhai, Minera La Victoria SA ("MLV"), which is developing the mine, Antilles Gold Limited and its subsidiary, Antilles Gold Inc ("AGI"), that is a 50% shareholder of MLV.

- The US\$29.5M EPC Contract represents approximately 85% of the estimated US\$35.0M required to complete the development of the mine, with the fixed price Contract significantly de-risking the capex for the project.
- The MoU also provides for MLV to enter into an Operating and Maintenance Contract with Xinhai for the Concentrator it will supply under the EPC Contract, which will de-risk the opex for the project.



Metals that Matter.

ASX Announcement | 01 October 2025

#### FLAGSHIP SECURES \$4.0 MILLION AND STRATEGIC PARTNER TO ADVANCE PANTANILLO TO FEASIBILITY AND DEVELOPMENT

Placement includes \$2.5m strategic allocation to Xinhai, a global EPC company with substantial expertise in mineral processing and mine construction, facilitating a pathway to final feasibility, funding and construction.

Flagship Minerals Limited (ASX:FLG) ("Flagship" or "the Company") has secured binding commitments to raise \$4.0 million (before costs) via a strongly subscribed share placement, comprising \$1.5 million to professional and sophisticated investors and a strategic placement of \$2.5 million to Shandong Xinhai Mining Technology & Equipment Inc. ("Xinhai"), a global process engineering and contracting company specialising in the provision of engineering design, procurement and construction services to the mining industry.

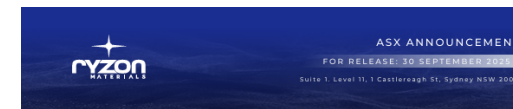
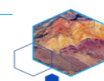
#### KEY POINTS

- \$4.0 million raised at \$0.10/share, including:
  - \$1.5 million placement to professional investors; and
  - \$2.5 million placement to Xinhai, a specialist provider of EPC to the mining industry
- Funding to advance Pantanillo through:
  - Complete JORC 2012 Mineral Resource Estimate
  - Metallurgical testwork and heap leach processing studies
  - Drilling to expand and infill new Mineral Resource for MRE update in 2026
  - Project work progressing toward feasibility studies.
- Xinhai will nominate a Non-executive Director to Flagship's Board, aligning the two companies and bringing substantial practical knowledge to the Flagship team.
- Xinhai to provide specialist expertise and services to Flagship related to metallurgy and mineral processing studies, engineering, procurement, construction (EPC), and project financing.
- Xinhai and Flagship will align themselves via a strategic partnership, which will de-risk decision making processes and facilitate accelerated development of the Pantanillo Gold Project.

Xinhai is a leading global process engineering and contracting company that specialises in providing engineering design, procurement and construction services to the mining industry. Xinhai has completed more than 500 EPC contracts globally, many including mine construction and mine operation management services. Xinhai has an emerging footprint in Latin America, supplying 30+ copper and gold projects with equipment and 10+ with EPC services.

Flagship Minerals Limited  
77 Robinson Road #06-00, Robinson 77, Singapore 068896  
Level M, 388 George Street, Sydney, NSW, 2000

ASX: flagshipminerals.com



#### Expanded Engineering Agreement and Capital Raising with Xinhai

Ryzon Materials Ltd ("Ryzon", or the "Company") (ASX: RYZ) is pleased to announce the signing of an expanded Contract for Detailed Engineering Design for the Nachu Graphite Project with Yantai Xinhai Mining Research & Design CO., LTD (Xinhai). Xinhai has also agreed to a capital raising.

#### Detailed Engineering Design Agreement

As announced in the 30 June 2025 Quarterly report, Xinhai started detailed engineering activities for the Nachu Project. An expanded agreement has been signed, which will cover a staged approach for the processing plant. The staged approach looks to fast track first production by commencing production rates at 80,000tpa.

Some of the items covered in the detailed engineering include -

- Met balance flow chart, slurry flow chart, equipment image connection diagram, building connection diagram;
- Plant configuration diagram (including various operation plants, ore bins, transfer stations, sand pump stations, reagent preparation workshops, laboratories, etc);
- Equipment or units (including various major equipment, belt conveyors, centralised lubrication systems, and units consisting of two or more types of equipment);
- Piping diagram (including the configuration and installation of various slurry, reagent, exhaust, compressed air and other pipelines);
- Tank layout diagram (including the manufacture and installation of various slurry chutes);
- Schematic diagram of the overall plant belt conveyor layout (provided when necessary, or shown in the process building (structure) connection diagram);
- General description of architectural design for civil works.

#### ASX RELEASE.

ST GEORGE  
MINING LIMITED

12 February 2025

#### Global Mining Engineering Firm backs Araxá Niobium-REE Project with A\$8 million equity investment and EPC deal

Groundbreaking engineering and construction services deal underpins  
pathway for Araxá Project development plans

- Development MoU: St George and Shandong Xinhai Mining Technology & Equipment Inc ("Xinhai") – a global service provider to the mining sector with work performed at more than 2,000 mines in more than 100 countries – have entered into a binding Memorandum of Understanding ("MoU") to work together on the development of the high-grade Araxá Niobium-REE Project in Brazil.
- EPC Contract: St George and Xinhai have agreed to negotiate and enter into a Strategic Partnership Agreement pursuant to which Xinhai will:
  - provide advice on metallurgical testing, mineral processing options, plant design and project construction
  - provide a proposal for a fixed-price EPC (engineering, procurement and construction) contract for the development of the Araxá Project
  - assist St George to arrange optimal, non-dilutive funding for the EPC contract
- A\$8 million strategic investment: Xinhai (and its nominees) has committed to invest a total of A\$8 million in the A\$20 million equity fund raising being completed by St George in support of the Project acquisition.
- Xinhai – industry leading EPC credentials: Xinhai is a leading global process engineering and contracting company that specialises in providing engineering design, procurement and construction services to the mining industry. It has completed more than 500 EPC contracts globally, many including mine construction and mine operation management services.
- Top-tier project delivery team: The engagement of Xinhai further boosts St George's in-country project delivery team dedicated to the fast-tracked development of the advanced Araxá Project and further de-risks this world-class project.

John Piresas, St George Mining's Executive Chairman, commented:  
"We are delighted to be partnering with Xinhai, a truly global mining services provider focused on providing clients with integrated construction and operation solutions for modern, efficient and energy-saving mines."



### 3 / Strong scientific research capabilities run by experienced professional teams.

- Xinhai Mine Research Institute



Pilot Research, Mining Design

- Xinhai Mine Design Institute

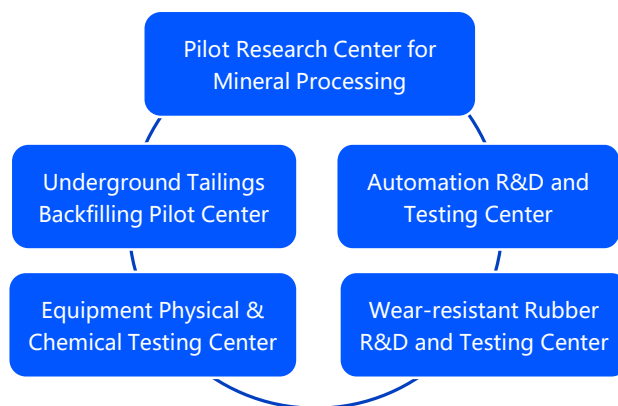


Processing Plant Design

- Xinhai Mechanical Design Institute



Equipment Manufacturing & Procurement



Pilot Research Center for Mineral Processing

## 4 / Intelligent Manufacturing Industrial Park.

With strong production capabilities, it can produce large-scale mining machinery such as **φ7m ball mills, 320m<sup>3</sup> flotation cells, φ20m\*20m leaching tanks, and φ100m thickeners**. The park can provide over **1,000** types of main and auxiliary equipment covering all mining, processing, and metallurgy processes for mines with a daily capacity below **50,000 tonnes**.



YKW31800A Gear Hobbing Machine

Maximum workpiece diameter: 8m; minimum workpiece diameter: 2.8m; maximum module: 40mm.



TKG6920-100\*40 Heavy-Duty CNC Floor Milling and Boring Machine

Table size: 10,000\*4,000mm; maximum load capacity: 100t; capable of milling and boring large workpieces.



CKXD5280\*40-100 CNC Double-column Vertical Lathe

Maximum turning diameter: 8m; maximum workpiece weight: 100t.



C540 Double-column Vertical Lathe

Capable of machining workpieces with a maximum diameter of 4m. Meets the processing requirements for end covers of mills with 3.6m-diameter cylinders.



CKNC6150\*2000 CNC Lathe

Features high machining accuracy and production efficiency.



CX6060-10000mm Floor-type Lathe

Primarily used for processing ball mill cylinders. Can handle workpieces up to 6m in diameter and 10m in length, capable of turning internal/external cylindrical surfaces, end faces, arcs and other formed surfaces.



## 5 / Modularisation Strategy of Process Plant

### Highlights of Modularisation Solutions in Australia ▼

- **Efficiency Boost:** Modular flotation units prefabricated in China/Asia cut construction time vs. traditional stick-build, ideal for tight wet-season schedules.
- **Integrated Functional Modules:** Factory-built units arrive fully equipped (pumps, piping, controls)—minimizing on-site work and maximizing quality.
- **Safer & Leaner:** Reduced on-site labor lowers safety risks and accelerates commissioning.

### Modularisation Flow in Australian Mining Projects ▼

#### Feasibility

- Conduct early ore selectivity analysis to optimize modular process layout.
- Establish a standardized interface platform (structural, electrical, and automation).

#### Constructability

- Engineering teams to improve design adaptability, transport feasibility (\*Road surveys serve as a key reference for module design dimensions), and civil work optimization to receive modules.

#### Delivery

- Integrate smart tracking system (for modules and tie-in elements) from design to construction to assure interface management.
- Integrate modules control systems within individual module wherever possible for easier consolidation to overall plant control.



Gold CIL Process



Flotation Line

## 6 / Innovative Materials & Equipment R&D.



XH Spiral Chute



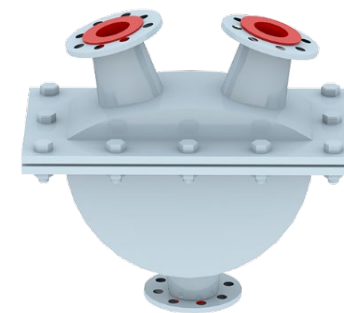
XHCV Cyclone



Wear-resistant  
Pinch Valve



Gapless Gate  
Valve



Automatic Reversing  
Valve



XPA Slurry Pump



XPB Slurry Pump



Wear-resistant Rubber, X-95  
Wear-resistant Rubber

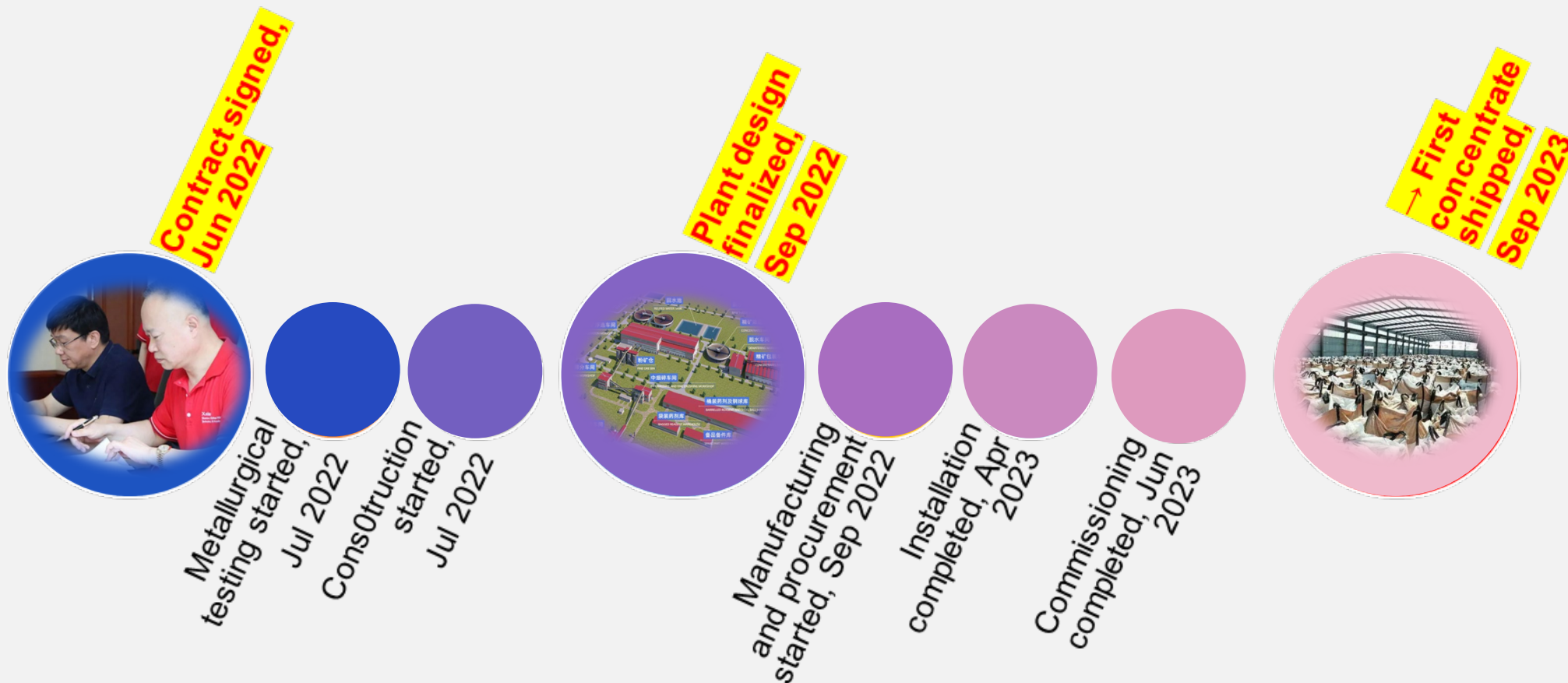




# 03

## PART 3 PROJECT REFERENCES

## Zimbabwe 2 million t/a Lithium Flotation Plant EPC Delivery in 364 days!





## Gweru (Zimbabwe) 500t/d Gold Process Plant

### Project Facts:

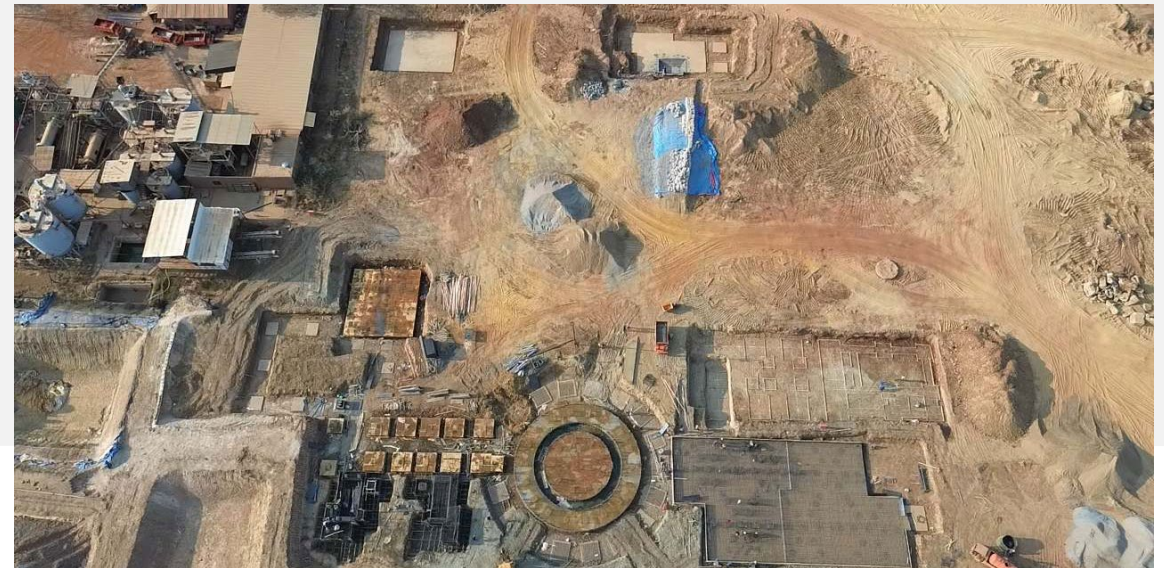
100% owned by Xinhai

Mine sites: Shamrock, Reden, Verdun

Process Plant Design complete: May 2025

Construction to complete by Dec 2025

Operation Commencement: Jan 2026





### Guinea 6,000 t/d Gold Processing Plant

Xinhai Solution: Raw Ore Slurry Preparation-Grinding and Classification-Gravity Separation-Cyanide Leaching Desorption and Electrolysis Process.



### Pakistan 1,500 t/d Copper Processing Plant

Xinhai Solution: Two-Stage Semi-Closed-Circuit Crushing-One-Stage Closed-Circuit Grinding and Classification One Roughing + Two Scavenging + Two Cleaning Flotation Stages-Two-Stage Mechanical Dewatering Process.





### Mongolia 3,500 t/d Iron Mining and Beneficiation Plant

**Xinhai Solution:** Three-Stage One Closed-Circuit Crushing and Screening-Stage Grinding and Stage Magnetic Separation-Concentrate and Tailings Dewatering Process.



### South Africa 3,000 t/d Chromite Processing Plant

**Xinhai Solution:** Concentrating Hydrocyclone-Thickener-Two Roughing + One Scavenging + Three Cleaning Flotation Stages-Filter Press Dewatering Process.



### **Tanzania 1,200 t/d Gold Processing Plant**

Xinhai Solution: All-Slime Cyanidation Process.



### **Nigeria 1,000 t/d Copper-Silver Processing Plant**

Xinhai Solution: Two-Stage Semi-Closed-Circuit Crushing-  
Two-Stage Closed-Circuit Grinding and Classification One  
Roughing + Three Scavenging + Four Cleaning Flotation  
Stages-Concentrate Dewatering Process.







### **Zimbabwe 700 t/d Gold Processing Plant**

Xinhai Solution: Two-Stage One Closed-Circuit Crushing-Two-Stage Closed-Circuit Grinding and Classification Gravity Separation-Cyanidation-Desorption and Electrolysis-Smelting-Tailings Filter Dewatering Process.

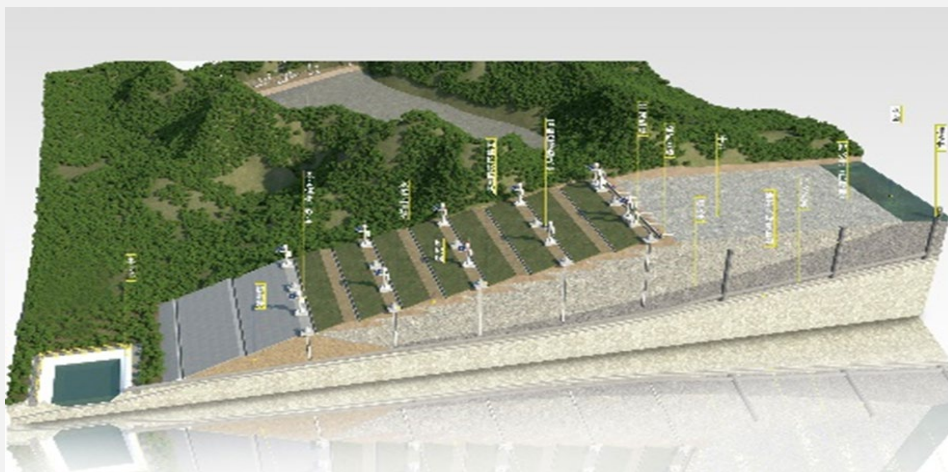


### **Malaysia 700 t/d Gold Processing Plant**

Xinhai Solution: Two-Stage Closed-Circuit Grinding-Pre-Leaching Thickening-Leaching and Adsorption-Tailings Dry Discharge Process.



### Tanzania 3,000 t/d Graphite Mine - ML644 TSF Design



- Malawi 440,000 t/a Monazite Rare Earth TSF
- Tanzania 3,000 t/d Graphite Processing Plant & ML644 TSF
- Nicaragua 1,000 t/d Gold Cyanidation Plant & TSF

### Yantai Muping TSF





PROCESS PLANT PROJECT REFERENCES					
SN	Project Name	Location	Capacity	Scope	Process Route
1	Mongolia 3 Million TPA Gold Mine Heap Leaching Project	Mongolia	3,000,000 TPA	EPCM+O: heap leaching, adsorption, desorption-electrowinning, commissioning	Heap Leach
2	Mongolia 2 Million TPA Gold Mineral Processing Plant	Mongolia	2,000,000 TPA	EPCM+O: full plant design, equipment supply, installation & commissioning	Heap Leach / CIP variants
3	Guinea 6,000t/d Gold Mineral Processing Plant	Guinea	6,000 TPD	EPCM+O: grinding, gravity, leaching, desorption-electrolysis	CIL/CIP + Gravity
4	Guinea 3000TPD Gold Mineral Processing Plant	Guinea	3,000 TPD	EPCM+O	CIL/CIP
5	Mexico 1200TPD Gold Mineral Processing Plant	Mexico	1,200 TPD	EPCM: cyanide leaching, desorption-electrolysis, smelting	CIL/CIP
6	Mexico 1500tpd Polymetallic (incl. gold) Project	Mexico	1,500 TPD	Flotation + downstream processing	Flotation + Cyanidation for Au
7	Zimbabwe 700t/d Gold Mineral Processing Plant	Zimbabwe	700 TPD	EPCM+O: crushing, grinding, gravity, leaching, adsorption, filtration, smelting	Gravity + CIL/CIP
8	Tanzania 600t/d Gold Mineral Processing Plant	Tanzania	600 TPD	EPCM: two-stage grinding, leaching/adsorption, water recycling	CIP
9	Tanzania 150t/d Gold Mineral Processing Plant	Tanzania	150 TPD	EPCM: full process incl smelting	CIL/CIP
10	Mongolia 1000t/d Gold Mineral Processing Plant	Mongolia	1,000 TPD	EPCM+O	CIL/CIP
11	Mongolia 800tpd Gold Processing Plant	Mongolia	800 TPD	EPCM+O	Heap Leach
12	Russia 500 TPD Gold Gravity Separation Project	Russia	500 TPD	Gravity separation focused flowsheet	Gravity
13	Mali 150 TPD Gold Mineral Processing Plant	Mali	150 TPD	EPC+M+O	CIL/CIP
14	Indonesia 300-1000 TPD Gold Plants (multiple)	Indonesia	300-1000 TPD	EPCM: crushing, grinding, oxidation pre-treatment, cyanide leaching	CIL/CIP
15	Shandong Qingdao 350t/d Gold Processing Plant	Qingdao, Shandong	350 TPD	Flotation + concentration	Flotation + Cyanidation
16	Shandong 1000t/d Gold Flotation Plant	Shandong, China	1,000 TPD	Flotation + low-power equipment	Flotation
17	Gansu Jinlong 300tpd Gold Processing Plant	Gansu, China	300 TPD	Flotation + cyanidation	Flotation + CIL/CIP
18	Anhui Xiuning 200tpd Gold Plant	Anhui, China	200 TPD	EPCM+O: design, equipment supply, commissioning	CIL/CIP
19	Qinghai 450tpd Gold Processing Plant (upgrade)	Qinghai, China	450 TPD	Upgrade from 300 t/d, refractory ore processing	CIL/CIP + refractory treatment
20	Hebei Chengde 300t/d Gold Processing Plant	Hebei, China	300 TPD	Flotation & cyanidation	Flotation + CIL

The reference list highlights major gold process projects we have delivered. For more projects with various mineral categories, please visit the below link:

[Successful EPC and Mineral Processing Projects - Xinhai Australia](#)

## Process Plant Project References

SN	Project Name	Location	Capacity	Scope	Process Route
21	Zhangjiakou (Chongli) 300t/d Gold Plant	Zhangjiakou, Hebei, China	300 TPD	EPCM+O	CIL/CIP
22	Gansu 500tpd Gold Plant	Gansu, China	500 TPD	EPCM+O	CIL/CIP
23	Liaoning 450t/d Upgrade Gold Project	Liaoning, China	450 TPD (upgrade)	Reconstruction & expansion	Flotation + Cyanidation
24	Guizhou 700t/d Gold Tailings Dry Stacking Project	Guizhou, China	700 TPD	Tailings dehydration (thickener + filter press)	Tailings management
25	Gold Processing Test Project in Africa	Africa	Pilot	Laboratory & pilot test to determine flowsheet	Test work (lab/pilot)
26	Congo Gold Processing Test (Douze Match)	Congo	Pilot	Processing test research to determine best flowsheet	Test work
27	Somaliland 200t/h Alluvial Gold Beneficiation Plant	Somaliland	200 t/h	Alluvial beneficiation complete supply	Alluvial Gravity + sluice
28	Xinjiang 300tpd Gold Processing Plant	Xinjiang, China	300 TPD	Leaching, carbon handling, desorption-electrolysis, smelting	CIL/CIP
29	Vietnam 120tpd Gold Flotation Plant	Vietnam	120 TPD	Flotation, concentrate dewatering, tailings dewatering	Flotation
30	Sudan 300t/d Gold Mineral Processing Plant	Sudan	300 TPD	Leaching, carbon adsorption, desorption-electrolysis, smelting	CIL/CIP
31	Laos 500tpd Gold-Copper Ore Dressing Plant	Laos	500 TPD	Beneficiation test, design, equipment manufacturing, installation, commissioning	Flotation (Cu-Au)
32	Vietnam 400tpd Gold Plant (other case)	Vietnam	~400 TPD	EPCM services	Flotation/CIL depending on ore
33	Philippines 200-500 TPD Gold Plants (multiple)	Philippines	200-500 TPD	EPC/EPCM services	CIL/CIP / Flotation
35	Brazil 500tpd Gold Project (case)	Brazil	~500 TPD	EPC/EPCM services	CIL/CIP + gravity
41	Small-Scale Mobile Gold Processing Plant Case	Global	Mobile units (t/h)	Mobile/mobileized equipment supply	Gravity/CIL depending
42	Indonesia 700tpd Gold Plant (case)	Indonesia	700 TPD	EPCM services - crushing, grinding, leaching	CIL/CIP
43	Malaysia 700tpd Gold Mineral Processing Plant	Malaysia	700 TPD	EPCM+O: process design, equipment supply, commissioning	CIL/CIP
45	China Hunan 250tpd Gold Processing Plant	Hunan, China	250 TPD	Processing plant design & equipment	Flotation/CIL depending





# THANKS

**Australia Xinhai Mining Services Pty Ltd**

Phone:

18 000 17 888

Email:

[info@xinhaiaustralia.com](mailto:info@xinhaiaustralia.com)

Mailing Address:

PO Box 218, Como WA6952